

Go kart tyres



SLICK go kart tyres



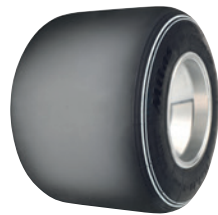
SLICK

RENT

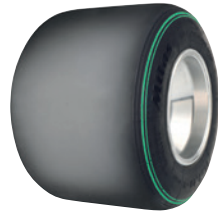
585383	10x4.50-5	SRX	EXTRA HARD
574372	10x3.60-5	SRH	HARD
573409	10X4.50-5	SRH	HARD
573428	11X5.00-5	SRH	HARD
573467	11X6.00-5	SRH	HARD
573448	11X7.10-5	SRH	HARD
583613	10x3.60-5	SRC	SOFT
573415	10X4.50-5	SRC	SOFT
573428	11x5.00-5	SRC	SOFT
573469	11X6.00-5	SRC	SOFT
573459	11X7.10-5	SRC	SOFT

RACING

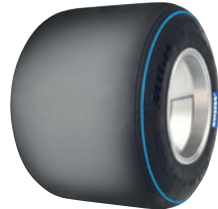
573418	10X4.50-5	SRL	ENDURANCE
573865	11X6.00-5	SRL	ENDURANCE
573463	11X7.10-5	SRL	ENDURANCE
574373	10x3.60-5	SRB	MEDIUM/SOFT
573420	10X4.50-5	SRB	MEDIUM/SOFT
573429	11X5.00-5	SRB	MEDIUM/SOFT
573867	11X6.00-5	SRB	MEDIUM/SOFT
573464	11x7.10-5	SRB	MEDIUM/SOFT



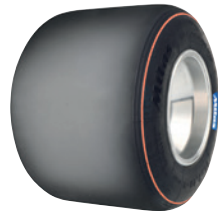
SRH



SRC



SRL



SRB

RAIN go kart tyres



RAIN

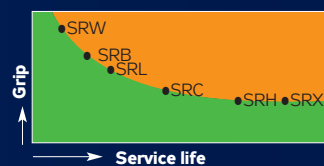
RACING

573474	10X4.00-5	SRW
573480	11X6.00-5	SRW

	Tyre diameter	Tread pattern	Rim	Tyre dimensions in service		Max. inflat. pressure	
				Width total	Diameter total		
				Inches	mm	mm	bar
GO KART TYRES							
5	10x3.60-5	slick	4.00	114	254	4	
	10x4.50-5	slick	4.50	132	264	4	
	11x5.00-5	slick	4.50	134	272	4	
	11x6.00-5	slick	6.00	185	276	4	
	11x7.10-5	slick	8.00	210	276	4	
	10x4.00-5	rain	4.00	125	250	4	
	11x6.00-5	rain	6.00	180	270	4	
GO KART TUBE							
576858	11x6.0/7.10-5	JS87	90/90	E.T.R.T.O.	V1-08-1	DIN 7785	
576860	4.10/3.50-5	JS87	90/90	E.T.R.T.O.	V1-08-1	DIN 7785	

dimension \ type	10x3.60-5	10x4.00-5	10x4.50-5	11x5.00-5	11x6.00-5	11x7.10-5	Tread pattern	Application
SRW							Rain	
SRB								Race
SRL								
SRC							Slick	Rental
SRH								
SRX								

Tyre grip diagram / service life (for various compounds)



SRW: Supersoft rain tyre for wet surfaces

SRB: Soft-medium racing tyre for national racing

SRL: Medium-hard racing tyre for endurance racing and clubs

SRC: Rental Soft tyre for indoor and outdoor rental driving in cold weather and on smooth surfaces

SRH: Rental Hard tyre for indoor and outdoor rental driving

SRX: Extra hard front rental tyre for combination with SRH rear tyre

GO KART tyres are manufactured for indoor driving as well as racing and are available in six different compound variants.

RECOMMENDED INFLATION PRESSURES

Rental tyres:	front	1.7 - 2.2 bar
	rear	1.8 - 2.3 bar
Racing tyres:	front	0.70 - 1.10 bar
	rear	0.75 - 1.20 bar
Rims without fitting screws	front	0.50 - 1.10 bar
	rear	0.55 - 1.20 bar

TYRE FITTING PROCEDURE

When fitting a tyre be careful not to damage a tyre bead (the bead may not be deformed). Rotation of a fitted tyre and the ROTATION designation should be of the same direction. After the tyre is fitted, inflate it to the pressure of 3.0 to 3.5 bar in order to assure a proper rim seat. Keep the tyre under such pressure for a few minutes to ensure a proper tyre shape. Decrease tyre pressure to the recommended value.

SIZE INDICATIONS ON GO KART TYRES

11	x	7.10	-	5
A		B		C
Overall diameter (inch)		Tyre width (inch)		Rim diameter (inch)



CONVERSION TABLE FOR INFLATION PRESSURES

bar	psi	kpa
0,1	1	10
0,2	3	20
0,3	4	30
0,4	6	40
0,5	7	50
0,6	9	60
0,7	10	70
0,8	12	80
0,9	13	90
1,0	15	100
1,1	16	110
1,2	17	120
1,3	19	130
1,4	20	140
1,5	22	150
1,6	23	160
1,7	25	170
1,8	26	180
1,9	28	190
2,0	29	200
2,1	30	210
2,2	32	220
2,3	33	230

Mitas Motorcycle Tyres and Tubes

Škofjeloška cesta 6, 4000 Kranj, Slovenia

Phone: +386 4 206 58 38

info-moto@mitas-tyres.com

mitas-moto.com

 Mitas Moto

 Mitas Moto Official

Mitas

mitas-moto.com